

Portland CEMA Inc. - Council for the Encouragement of Music and the Arts

Newsletter - November 2009

President's Thoughts

I write this Tuesday night after what has been a very "emotional" day, farewelling our friend Frank Thompson at a wonderful service at the Civic Hall.

It seems yesterday, not 30 years, since the Thompson family were so kind to me when I came from Melbourne to Portland for my first teaching appointment at "the Tech." Portland seemed like a welcoming place. Thanks to people like Ern and Shirley, and their young folk it was. Sing a longs, morning runs, bike rides and lots of laughter with Cindy and Frank are amongst my earliest Portland memories.

Frank continued to call me "Miss Waldren" for 30 years!! The cheeky boy!!

Cindy and Shirley shared happy times with us in the "Showboat" cast. Was that 1980? (Was it really ok to use black face paint back then??) My first CEMA production. A real taste of community in a country town.

I don't think my "City friends" could ever imagine the sense of community and strong bonds that were evidenced in the Civic Hall today, and over the past week or so at Gorae West.

Frank was a much loved and respected member of the community. He was a great supporter of Music in and beyond Portland. He nurtured young musicians, and encouraged older ones. He even gave our CEMA concert band an extended life when it was "ailing" a few years ago. We were very glad that our young folk were able to keep playing in the Concert band genre for a while longer due to Frank's generosity.

Cindy, Sue Ellen, Shirley, Sharryn, Emma, Jessica, Clarissa, and Patricia all have many friends in CEMA, and the wider Arts community. The three generations all have talents in Music and the Arts which they have happily shared with us over the years and we really appreciate that.

On behalf of CEMA members past and present we extend our heartfelt sympathy to Frank's family and friends.

"Thank you for the Music"

Jan Colliver (President) 5526 5264

Membership Secretary's Report

We have 116 paid up members at present slightly better than this time last year. We note there are still active members who have not rejoined yet.

The next newsletter will only go to members current at the time.

If your name or address is not correct will you please phone us or leave a note at The Arts Company as a new list of this years members is being prepared for next month.

Bill & Bev Martin (Membership Secretaries) 5527 9270

THE ARTS COMPANY

It was my privilege to attend the recent Regenerating Community: Arts, Community and Governance National Conference in Melbourne. Many regions and cities around Australia have recently presented a plethora of community arts projects. A roundup of those projects was presented at the conference. The 300 delegates were from around the nation and overseas. One of the international keynote speakers, Anmol Vellani, the Executive Director of India's Foundation for the Arts, described a small town's community arts organisation which was established in the 1940's that had amazing parallels with Portland's CEMA.

As a result of networking at the conference some interesting artists have booked to travel to Portland to stay at the June Hedditch Studio Apartments and share their skills by



The cupboards are a new addition to the Mezzanine room at the Arts Company

Coming Up

THE SENTIMENTAL BLOKE

This innovative theatrical adaptation of a timeless classic of Australian literature, is set in the physical framework of the old Vaudeville theatre. The *Petty Traffickers* production incorporates silent comedy routines in its robust and energetic re-telling of the charming story, written by C.J. Dennis in 1915.

Date & Time: **Thursday, 29 October, 8.00pm**
Venue: **Portland Arts Centre**
Cost: **Full price \$25**
Concession \$20
Student \$10
Family \$60

Karl Hatton (Cultural Services Officer) 5522 2301
Joy Ralph (Assistant CSO) 5522 2301
Glenelg Shire Arts Program

Coming Up

TENTERFIELD SADDLER - the Peter Allen songbook

This is a show about the life and great music of one of this country's greatest stars, Peter Allen. Starring John Bowles, the show is packed with hit after hit including *I Go To Rio*, *I Honestly Love You*, *Don't Cry Out Loud*, and the well known hit *I Still Call Australia Home*.

Date & Time: **Saturday, 14 November, 8.00pm**
Venue: **Portland Arts Centre**
Cost: **Full price \$20**
Concession \$15



Portland CEMA Inc
P.O. Box 385 Portland
VIC 3305
portlandcema.org.au

running workshops at The Arts Company. The workshops include ceramics, surface art and songwriting. My Attendance at the conference has reinforced my belief that Portland's community arts scene stands out. How many towns the size of Portland have a performing arts centre, and a visual arts centre as large and with the variety of art mediums as The Arts Company?

The Creative Kids sessions continues to encourage early primary and senior primary children to develop their interest in creative art. Workshops continue through October and November they include Felt making, Introduction to Mosaic and silk painting.

I would like to take this opportunity to thank Heather Clarke for her tireless work for The Arts Company especially taking over the reigns when I am out of town. Her exemplary work on production and coordination of the Admella Exhibition went unacknowledged in the last newsletter, probably because she wrote The Arts Company report.

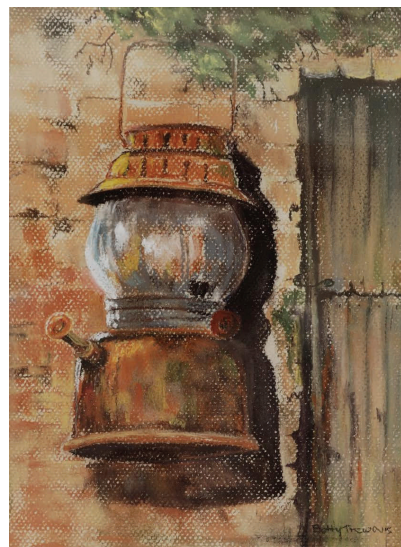
Lesley Jackson (Chair) 5523 4866

ARTISTS' SOCIETY

Hello to all our Art friends. Good luck to all those who have entered into Rotary and hope you sell your work. This month we are having a display at the Arts Gallery to help celebrate the Upwelling Festival. All Artists are invited to enter paintings in relation to this eg. whales or sescap . Paintings are to be delivered at the end of October. Betty and Anna will be hanging them on the 30th if you can help please come along on the day or maybe help on the roster for the weekend.

There have been 2 people interested going to the Grampians. We can rent a small cabin in the caravan park, for those interested, or maybe a day trip would be more suitable, if interested ring or leave a message to Anna on 0413375338 or Betty.

We are looking for ideas for Arts promotion to help



The Old Lantern is from The Artists' Society October exhibition at the Arts Company.

PORTLAND FILM SOCIETY

present:

PORTLAND UPWELLING FESTIVAL:

Waves and Whales

We are very excited about the *Upwelling Festival* to be held on 31st October. In keeping with the celebration of the Bonney Upwelling, the Portland Film Society is screening *Waves and Whales*.

At 1:00pm we are screening *The Big Blue*, a documentary about the magnificent blue whales which visit us each year to feed on nutrients provided by the Bonney Upwelling. We are privileged to have in our community (and as a Film Society member), Dr Peter Gill, one of Australia's leading marine scientists, whose work centres on Blue Whale research. Peter will introduce the documentary, and then answer questions afterwards

At 2:30pm we are presenting *Waves*, a compilation of footage of local surfers and surfing, including Adam Robertson and Luke Mowatt. We are hoping to have local musicians playing during this.

Entry is by gold coin donation, all of which is to be donated to Blue Whale Research

encourage more young people to paint with our group. Maybe you have some great ideas. Cema have funding available for any arts that encourage and promote young people.

A big thankyou must go to Warren Mars and Kevin Deacon who spent almost 2 weeks building the cupboards and shelves at the back of the Arts room, they look terrific! Everyone will now have their own pidgeon hole for their equipment. It will also keep our end of the room more organised. They now need 2 coats of paint, can you help? if so the paint and brushes will be left at the back of the art room, if everyone paints a bit the job will soon be done!

ARTISTS HOT TIPS

- 1) You can't see your lights correctly if you don't have your darks in place.
- 2) Make the mark you intend and leave it alone so you don't end up with mud.
- 3) The best part of being an artist is refining the whole painting until there's nothing left that annoys you, but beware of the fiddle factor!

Anna Deacon (Secretary) 0413375338



A Community Partner of CEMA Inc
2008-2010
"Arts For Life"

Book Discussion Group

We are currently selecting the books we would like to read next year so for anyone interested in joining, now is the time to come and choose the titles from the C.A.E. catalogue for 2010. We meet @1.30 pm the 1st Wednesday each month at 113 Cape Nelson Rd.

Lyn Smith (Convenor) 5523 1459

Graft Group

We are still continuing on with 10 members. Once a month we have CWA join with us to do their craft.

At the moment we are just doing anything that we want eg knitting booties large and small, scarves etc. We meet on Tues. at 10am so please come and have a cuppa with us at any time.

Carol Darby (Convenor) 5523 4498

Fibre Group

On the 19th October, 6 members will be traveling to Hall's Gap for the Spinners & Weavers Sharing Day at Norval conference center on the occasion of 40th anniversary since it's inception.

We are now sharing our premises with the Pioneer Quilters.

We are learning how to crochet a new design for rugs or cushions

We meet every Thursday morning at 10.30 in the Pavilion at the Arts Co. and new members are most welcome.

Dorothy Longney (Secretary) 5523 2658

Historical Society

At our last meeting it was decided that I should send the "Reminder" for the CEMA Newsletter on the 3rd Sunday of each month, so here it is.

Portland Historical Society Meeting

The November meeting of the Portland Portland Historical Society in on Thursday, 5th November at the Portland Arts Centre commencing at 1:30 pm.

Our Guest Speaker for this month will be Rick Rowbottom and Rick will talk to the Society on one of his hobbies, Mechanical Music.

New members and interested persons most welcome. Enquiries to Betty Vivian.

Betty Vivian (President) 5523 1790

Leadlighter's Guild

Reminder next meeting Thurs 22nd October to discuss Christmas activities. Working days Wed afternoon from 1 pm and Thurs Evening from 7.30 pm

Heather Clark (Secretary/Treasurer)

PIONEER QUILTERS

Next meeting Monday 1st November for a cuppa at 10 am and commence meeting at 10.30 am. Guest speaker Barbra Porter from Terang followed by Mary Sharrock demonstrating a folded Christmas tree.

Material requirements;

2 pc contrasting material, red and green or Christmas material.

4 inches deep across the width of the material.

And the usual sewing items.

Dorothy Longney (Secretary) 5523 2658

Mavis Jennings (President) 5523 1556

Poetry Reading Group

Members enjoyed a delightful Pot-Purri of poetry at our last meeting. A wide field subject came from pens of:

Robt Louis Stevenson, Pam Ayres, Jim Pyke, John Masefield, Philip Larkin to name a few.

Next meeting scheduled for Sun 15th November at 2 pm at Port. Art Centre.

Dawn Turner (Convenor) 5523 1804

Helen Anderson 5523 4659